

MV INDIANA JONES



SHIP TYPE

Coaster

FLAG

Antigua & Barbuda

CLASS

DNV

BUILT

1989

GENERAL PARTICULARS:

DWAT	4.402
DWCC summer	4.100
DWCC winter	4.000
GT / NT	3826/2043
LOA	104,81 m
Beam	16,25 m
Draft fully laden	5,78 m
Built	01/1989
Flag	Antigua & Barbuda
Homeport	Jork
Iceclass	Finnish ice class 1A
Slings / Tarpaulins fit.	yes
Call sign	V2DP7
IMO No.	8806149
Airdraft in ballast	30 m
P&I	Thomas Miller

CLASS

Classification	DNV
----------------	-----

HOLDS / HATCHES

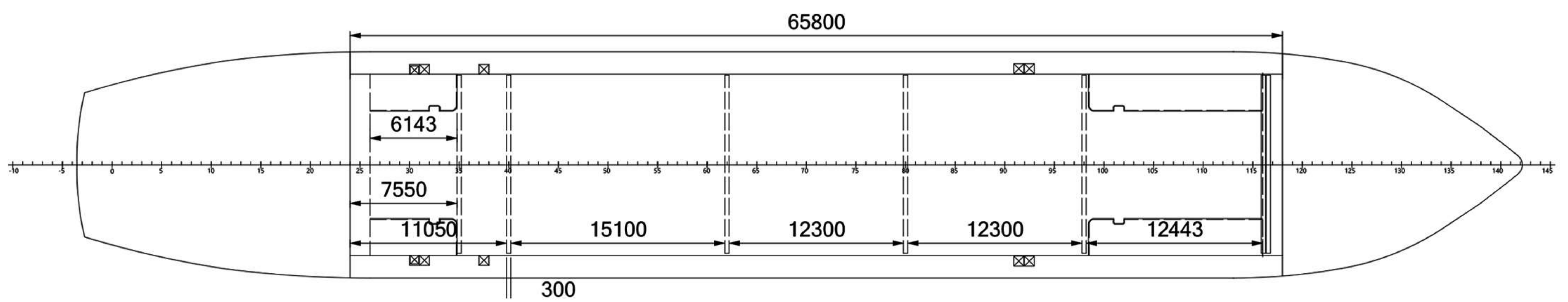
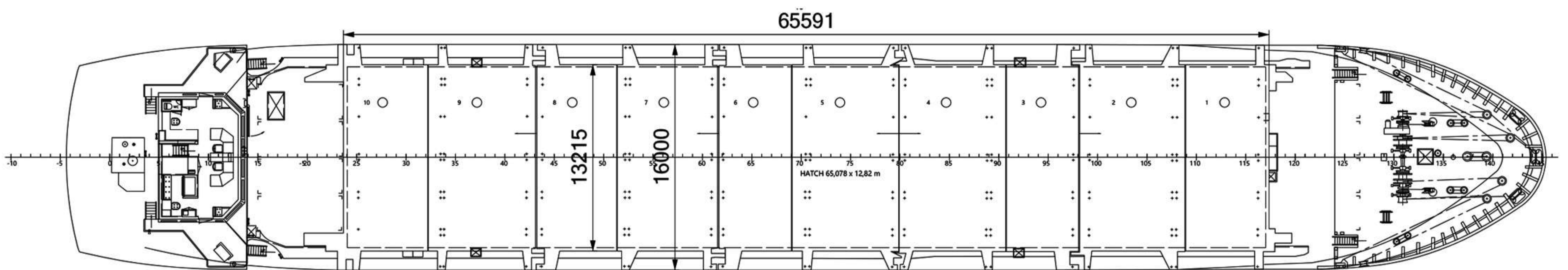
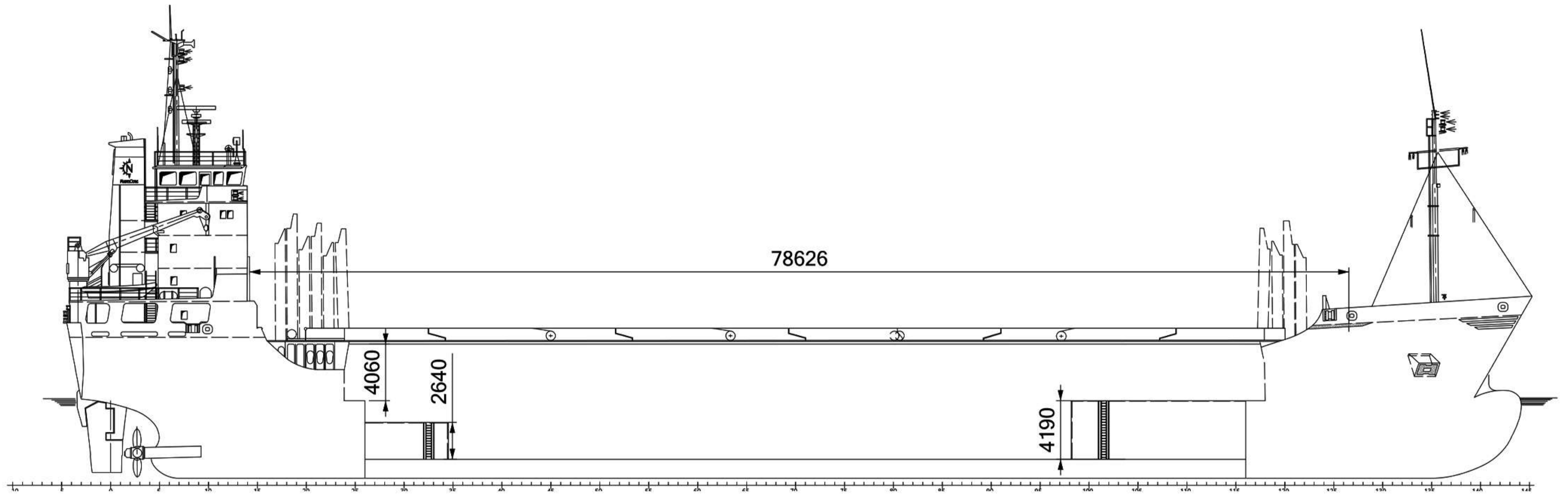
Types of holds	box shape
Capacity grain	: 228.170 cbft
Capacity bale	224.880 cbft
Grain fitted	yes
IMO fitted	yes
Tanktop strength	10 mts / sqm
Tweendecks	4 pcs
Hatchcover type	hydraulic folding
Hatchcover strength	1,7 mts / sqm
Ceiling	steel
Grain Bulkhead	two pieces

ENGINE

Main Engine	1 Wärtsila 8 R 32 D
Speed / consumption	abt. 12 knots
Fuel	abt. 10,5, m/ton Gasoil
Gear	no
Bowthruster	yes – 300 kw
Others	fully timber fitted
	Container fitted
	2x dehumidifier



MV INDIANA JONES



MV INDIANA JONES

