

MV ROCKET RACCOON



SHIP TYPE

Coaster

FLAG

Antigua & Barbuda

CLASS

RINA

BUILT

1987

GENERAL PARTICULARS

DWAT	3.531
DWCC summer	3.320
DWCC winter	3.220
GT / NT	2642/956
LOA	87.98 m
Beam	12.80 m
Draft fully laden	5.18 m
Built	1987
Flag	Antigua & Barbuda
Homeport	St. John's
Iceclass	finnish/swedish 1a
Slings / Tarpaulins fit.	no
Call sign	V2OA8
IMO No.	8707783
Airdraft in ballast	25.90 m

CLASS

Classification RINA 100 A5 MC E3 AUT

HOLDS / HATCHES

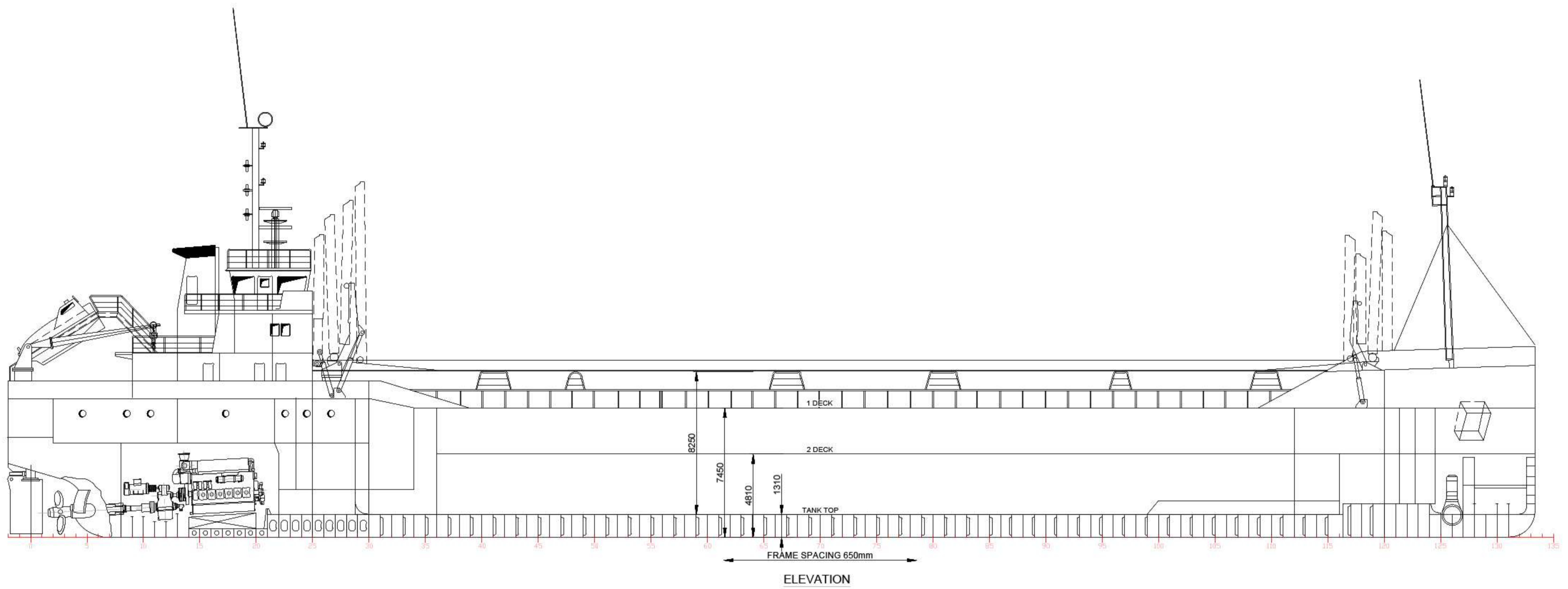
Types of holds	single / box
Capacity grain	168.000 cbft
Capacity bale	168.000 cbft
Grain fitted	yes
IMO fitted	no
Tanktop strength	12.00 t / sqm
Tweendecks	no
Hatchcover type	hydraulic folding
Hatchcover strength	1.75 t / sqm
Ceiling	steel

ENGINE

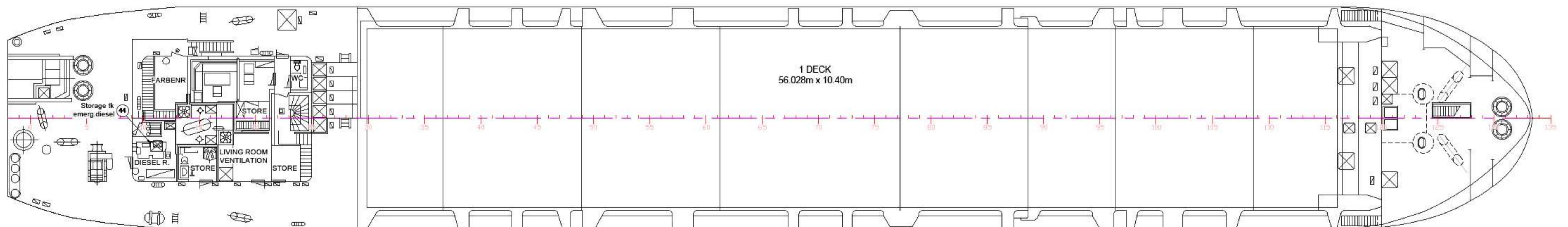
Main Engine	Wärtsilä 6 R 32 1835 KW
Speed / consumption	abt. 10.0 knots
Fuel	abt. 5.0 m/ton Gasoil
Gear	no
Bowthruster	yes – 165 kw
Others	slings/tarp-fitted



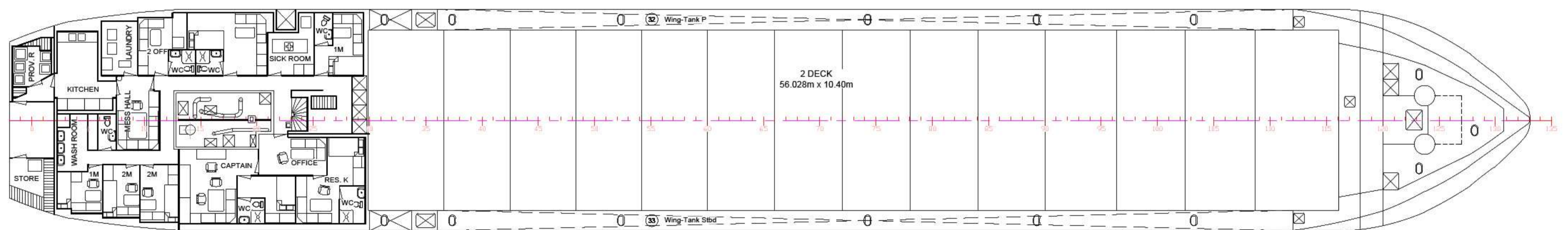
MV ROCKET RACCOON



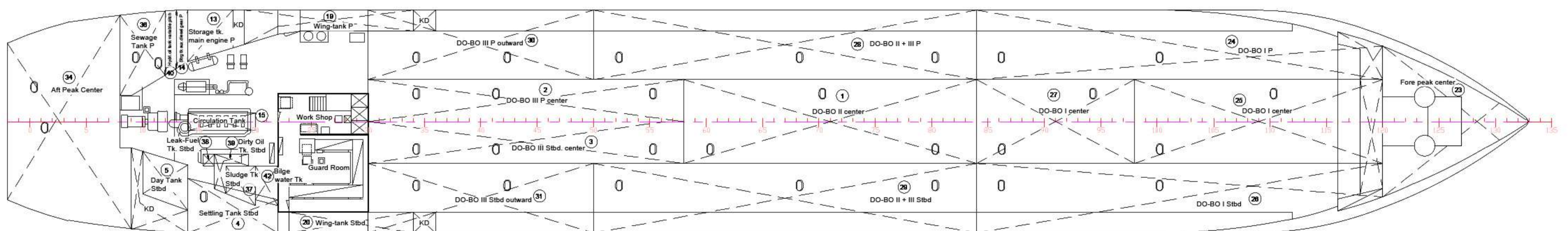
ELEVATION



PLAN VIEW - 1 DECK



PLAN VIEW - 2 DECK



PLAN VIEW - TANK TOP

